

THE N°1 DESIGN AND ARCHITECTURE MAGAZINE

CURVE®

ART • ARCHITECTURE • DESIGN • LIFESTYLE
www.curve-magazine.com

APR/MAY 2012

ICONIC
REVIVAL
A Spin on
POP Art

REBIRTH OF
SAATCHI & SAATCHI
THAILAND

Caught
on TAPE

Imaginative
Composite Art

ALL YOU
CAN EAT
A Visual Feast

DISCOVER
THE REAL
LEGO LAND

Exclusive
RACHEL KOHLER
Understanding
the Gracious Living

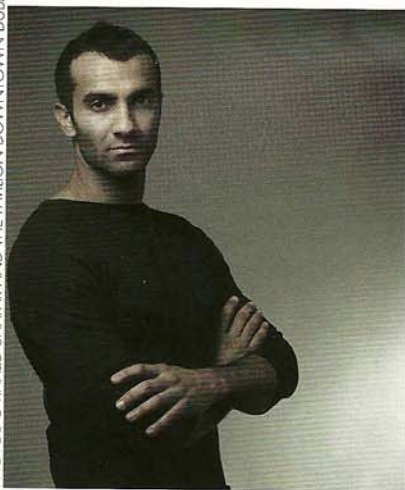


ILLUSION by KHALID SHAFAR

From the UAE and New Zealand



PHOTOS © KHALID SHAFAR AND THE PAVILION DOWNTOWN DUBAI



Bright lights and the big city is the can't-get-out-of-your-head line of a Cee Lo Green hit song, but it is also the inspiration behind designer Khalid Shafar's "Illusion" series. With a foot in New Zealand and the other in the UAE, the Emirati national was

reminiscing on some of his most significant memories of Dubai when he conceived of the "Illusion Stool", which features dynamic movement produced by Danish rope weaving over an ash timber frame. This was soon followed by "Illusion Arm", an armchair that ardently combines elements of city life – the energy, the buzz and the vibrancy are palpable in the style and angles of the woven rope on the chair body structure. The newest in the line are the "Illusion Dine" dining chairs, which through their colors and linear weaving represent motion and speed that epitomize a city highway at night.

Shafar likes to create "contemporary and quirky interior design objects with stories to tell". And his rapidly growing portfolio is proof that he is a stellar storyteller. "Each Khalid

Shafar object is a simple design story that is richly detailed. Simple yet avant-garde, it is a revival of the '50s, '60s, and '70s sleek styling, reinterpreted with today's furnishing trends," he says. Shafar's design journey also makes for a fascinating story to share. While a successful marketing professional, Shafar decided in 2005 to act on his dream of becoming a designer – he earned a degree in Interior Design from the American University in Dubai, took a design course at London's Central Saint Martin's College, and followed that up with heavy woodworking at the Centre for Fine Woodworking, New Zealand. Four years later, he decided to indefinitely put the corporate world behind and make design the only object of his affection.

www.khalidshafar.com