

ALL SEE EAT SHOP STAY



red|guide

KASA
KHALID SHAFAR

SHOW MAP

« previous tip

next tip »

KASA

Every piece of furniture at Kasa comes from Khalid Shafar who gave up his job in marketing in 2009 in order to work as a designer. Already during his studies he's earned his spurs as an interior designer in Dubai, London and New Zealand, his speciality are objects and furniture. Under his brand name Khalid Shafar he unites a design aesthetic that is developed from stories and "tells a story", as he explains. His table "Kiste" for example is a wooden box that can be easily transformed into a side table with glass surface. At his chandelier "T" there are copper lampshades hanging at a rolled, floral-patterned mattress.

These are the small gimmicks that characterise Khalid Shafar. When it comes to his designs he follows the premises of creativity, practicality and functionality - experienced craftsmen in the Emirates implement his ideas. At Kasa in Ras al Khor these can be marvelled at during opening hours or upon request.

ADDRESS

Street 22a,
Community 612 7
Box 3492 Dubai

CONTACT

Email

OPENING TIMES

Sat-Thu 09.00-15.00
and on request

GETTING THERE

55/61/63E/64/64 A
- Ras al Khor

Dubai 28°

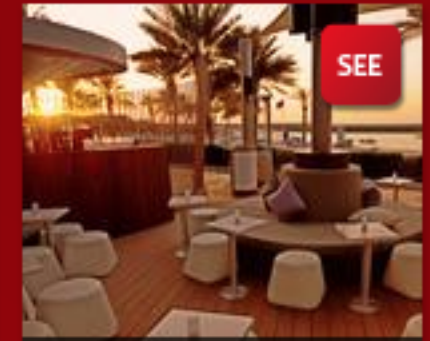
THU



28°

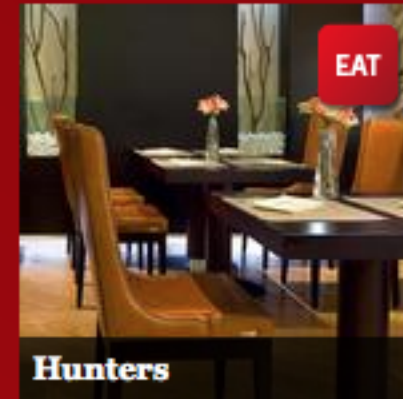
Facts

First Hours



SEE

Bliss Lounge



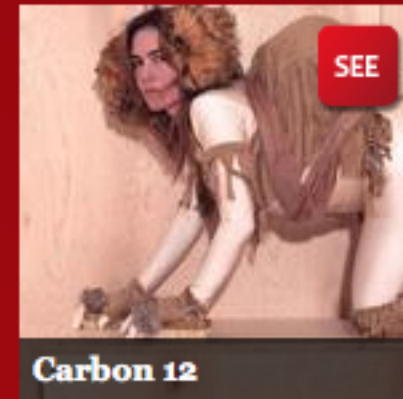
EAT

Hunters



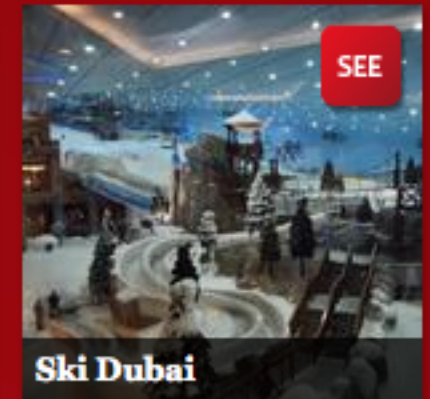
SHOP

Gate Village



SEE

Carbon 12



SEE

Ski Dubai

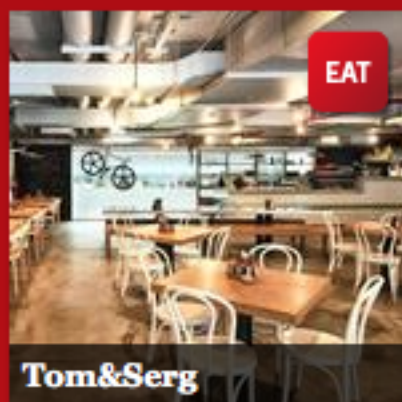
Kasa

 Add  Like  Share



SEE

Heritage Village



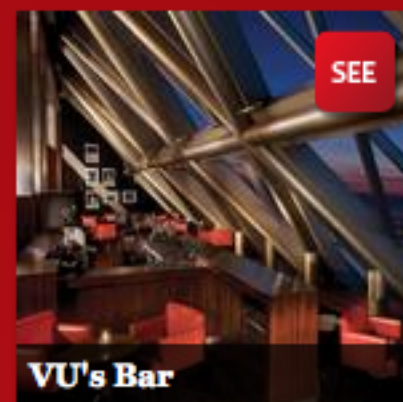
EAT

Tom&Serg



EAT

Indego



SEE

VU's Bar



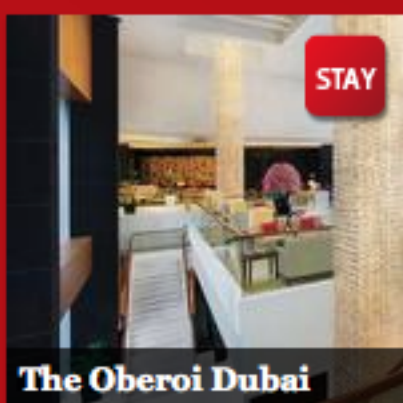
SHOP

Gold Souk



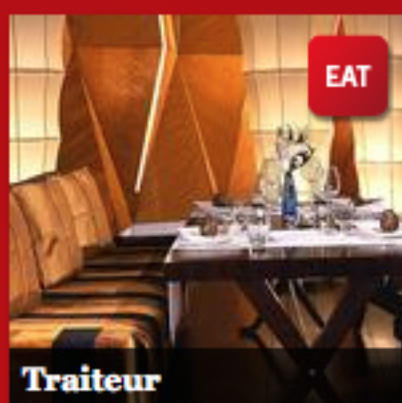
SEE

Desert safari



STAY

The Oberoi Dubai



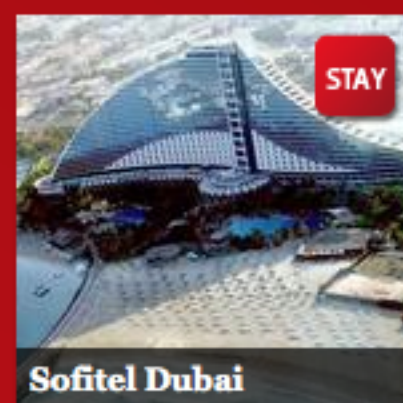
EAT

Traiteur



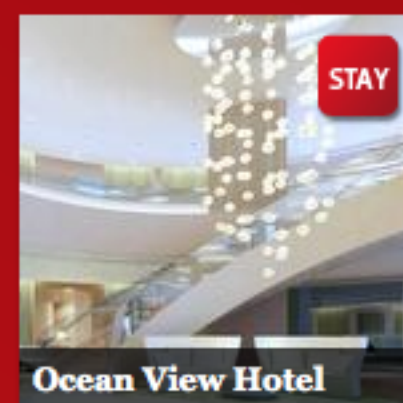
EAT

Kabab-ji Grill



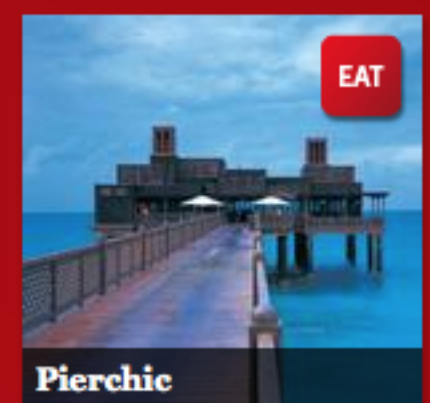
STAY

Sofitel Dubai



STAY

Ocean View Hotel



EAT

Pierchic