



> **MAGAZINE**

NEWS

ECODESIGN

INTERIORS

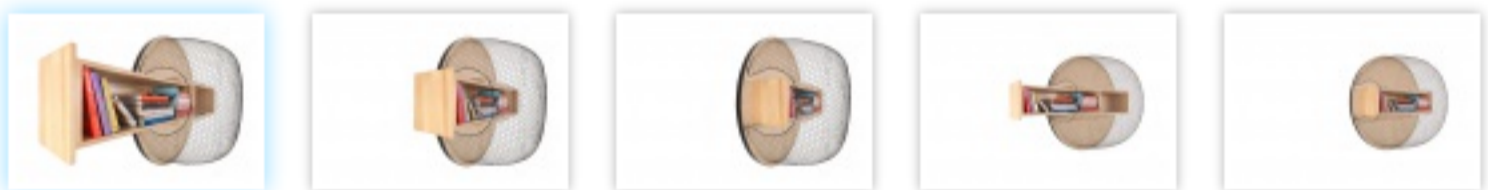
HIGH-TECH

EVENTS

DECRIPTION



The Trap wall shelf by Khalid Shafar - Limited edition // © Khalid Shafar



NEWS

The Trap wall shelf by Khalid Shafar

A beautiful novelty in the field of Design Art attributable to Emirati creator Khalid Shafar, one of the leading designers of the moment in the Middle East.

With wall shelf The Trap, he invites us to a real immersion in his childhood memories. Inspired by the fish traps, which adorned the beaches of the old fishermen villages of Dubai, and whose aesthetics as well as their function fascinated him, The Trap takes up the principle of the single entry for catching fish.

The result is a mobile piece with a sensitive and poetic design where the fine toretic cover made of steel wire echoes the massive structure of the ash shelf.

A busy period for Khalid Shafar who opened Kasa late last year, a new space dedicated to his work but also to local creation, in the heart of the industrial district of Ras Al Khor in Dubai. A place that aspires to become a reference for design in the region.

The designer will also be present at **Design Days Dubai** from March 18 to 21 on the Carwan Gallery stand (Beirut). He will also be in charge of the scenography for the Tai Ping et Moissonnier stands. Finally, he will be one of the event's four designers presented by the Dubai Culture & Arts Authority.

More information on the designer's website:

www.khalidshafar.com

14/01/2013

